



RHR



REAL ESTATE

HIGH RETURN

RUMANIA



ALTO REDDITO

ALTO RÈDITO

VYSÒKIJ DOKHÒD

HOHE RENDITE

Timișoara

S.C. IMO VITTORIA S.R.L.

Switzerland
Lugano/ St.Moritz

Spain
Costa del Sol

Italy
Luino

Brazil
São Paulo

Dominican Rep.
Samanà

www.high-return.com



RHR

REAL ESTATE



Rumania is situated in eastern Europe.
It has a population of about
23'000'000 inhabitants.
The capital is Bucarest.

www.high-return.com



RHR

REAL ESTATE

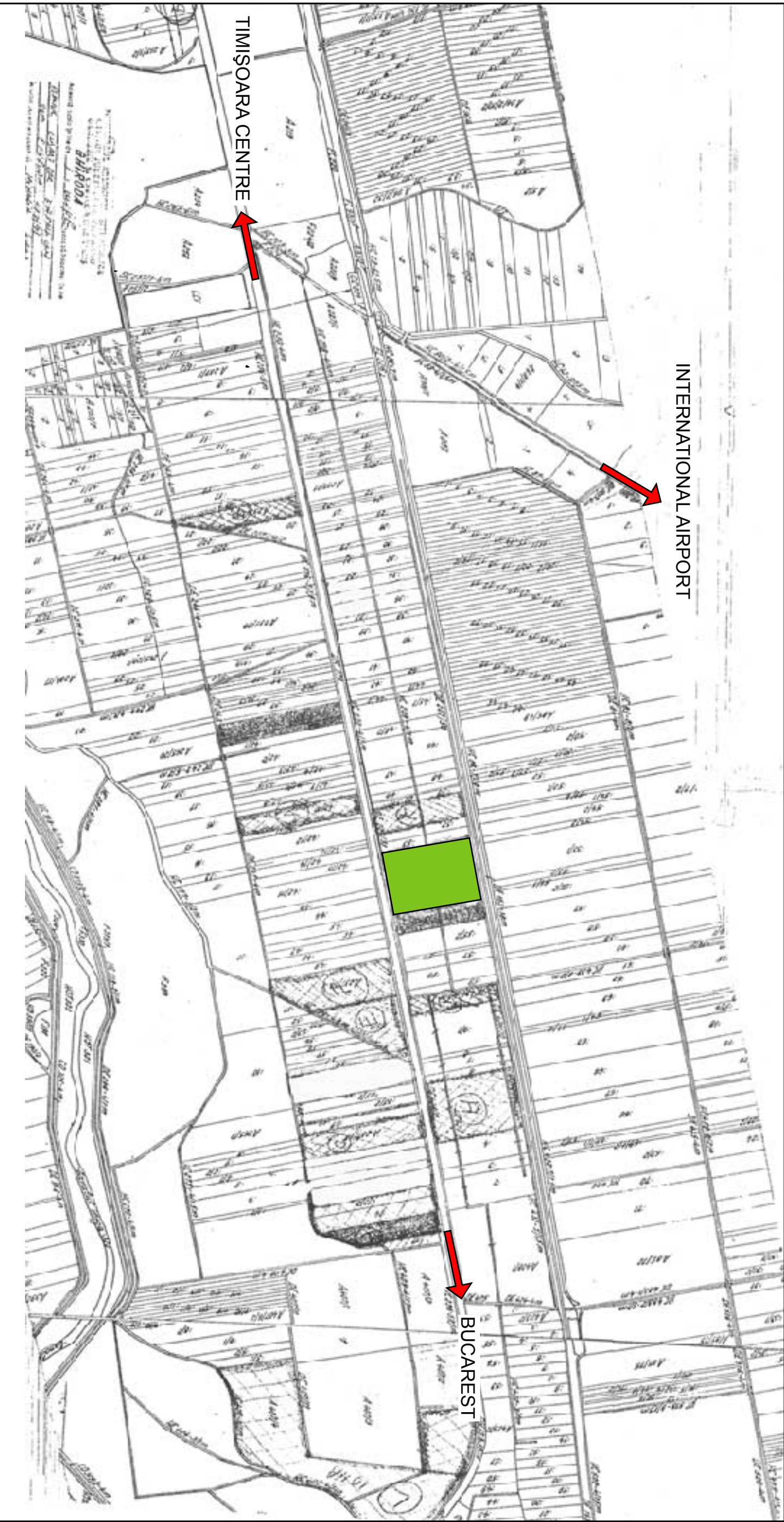
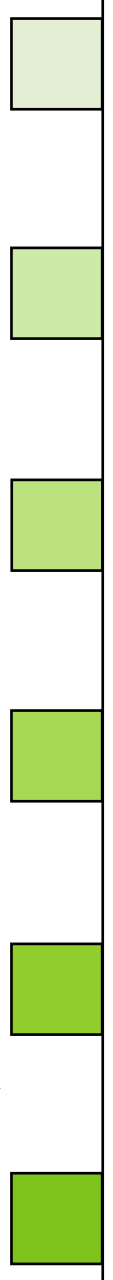


The most important cities of Rumania are:

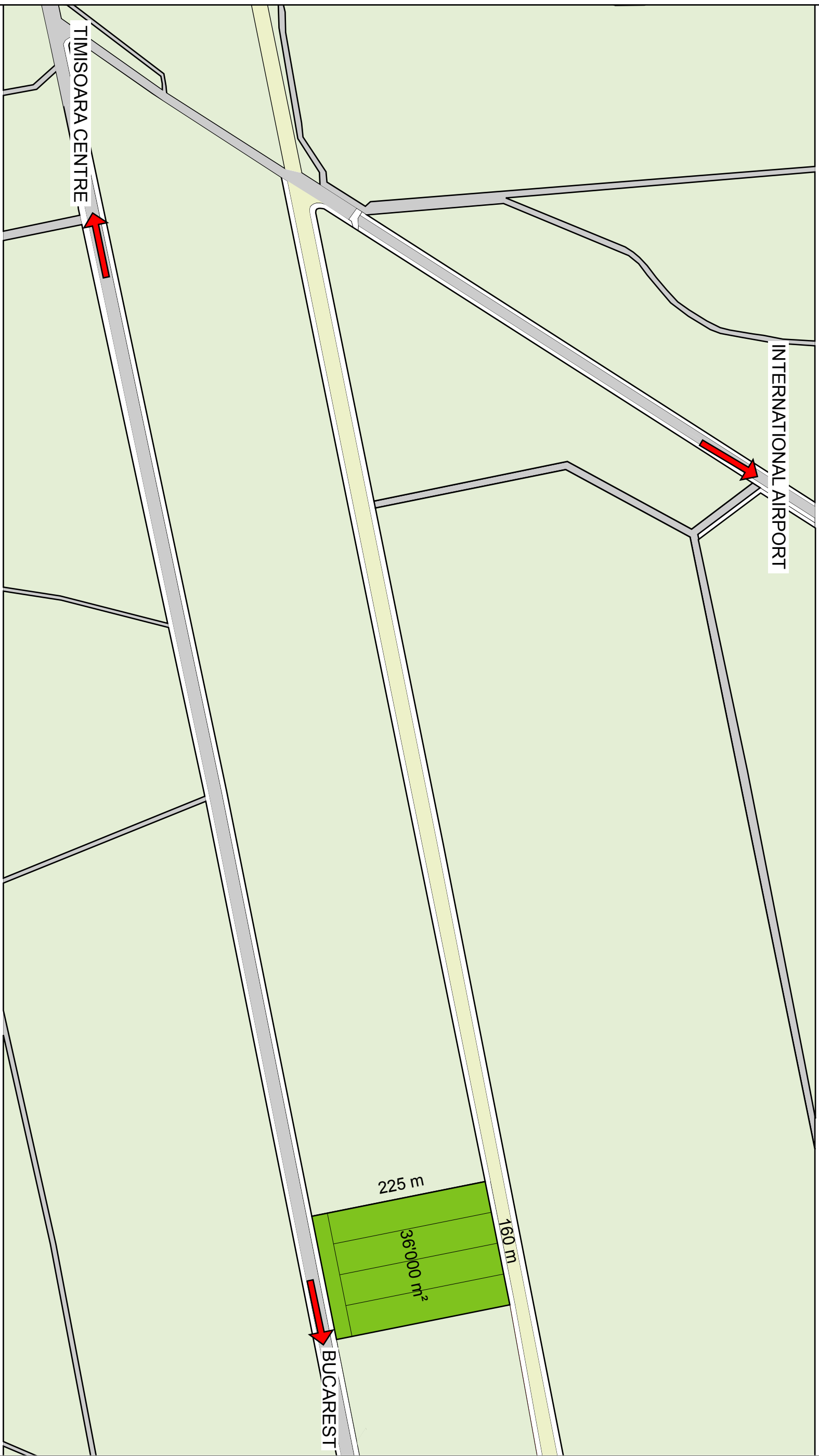
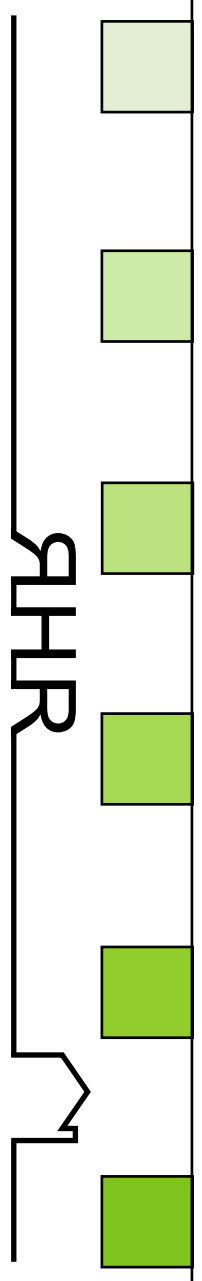
- Bucarest, about 2'200'000 inhabitants
- **Timișoara**, about 600'000 inhabitants

www.high-return.com



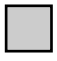
PHR
REAL ESTATE



QHHR
REAL ESTATE



www.high-return.com

 Terreno IMO VITTORIA  Ferrovia  Strade

SCALE 1:5'000



RHR

REAL ESTATE

S.C. IMO VITTORIA S.R.L.

Timișoara

-OFFERS-

At the moment, the lands on sale are as follows:

- Lot A 36'000 sm. with about 160 street looking m. and 225 m. of depth. Price: 10.- Euro/sm.
- Lot B 18'000 sm., 80 street looking m. and 225 m. of depth. Price: 12.- Euro/sm.
- Lot C 12'375 sm., 55 street looking m. and 225 m. of depth. Price: 14.- Euro/sm.
- Lot D 9'000 sm., 40 street looking m. and 225 m of depth. Price: 16 Euro/sm.

If the client isn't interested on these grounds for his business, we suggest to buy one or more shares of the S.C. IMO VITTORIA S.R.L real estate (maximum 15 shares available) at the price of 20'000.- Euro each; the purpose of the society is to sell the lands by the year 2005 with an increase of 14% per year.



RHR

REAL ESTATE

TIMIȘOARA

At present, thanks to its dimension (about 600'000 inhabitants), Timișoara is Rumania's second city because of its industrial development. It is situated in the farthest northwest area of the country where leave the most important roads leading to the industrialized west.

An international airport connects to the capital, Bucarest, and directly to Italy.

Our operative society, S.C. IMO VITTORIA S.R.L., has located its bureaus in Timișoara, in Str. Treboniu Lauren 5, and it is associated for local activities to RDM, specialised in the legal and commercial field. The managerial board is composed by Mr Marco Rihini and Mr Paolo Siviero, both Swiss and resident in Lugano, and by Mr Ioan Mihaila, Rumanian, who lives near our society.

S.C. IMO VITTORIA S.R.L. offers to its customers short time real estate investments (about two years) over rural grounds or building areas (industrial or commercial), taking on the responsibility of reorganization, upgrading, splitting and selling to the final user who wish a home full service to reach his purpose.

The technical and legal documentation and the bank assistance will be provided by the RAIFFEISEN Bank (Austrian group). The trust assistance will be provided instead by a renown society in Lugano, in order to guard your needs even from a fiscal point of view. In Lugano, the Swiss Union Bank is at your disposal as a steady consultant, as well as for Messrs Righini and Siviero.

The technical assistance will be supplied on site by the De Angelis Architecture bureau in Lugano, keeping in mind that an important company, producing prefabricated buildings, is operating in Timișoara.

The capital gain on the grounds value has reached 14% per year in the last three years, with a trend still very positive. For this reason, the lands can always be launched by us on the market in the shortest time or hoarded as an advantageous estate.